

 **LOOM<sup>+</sup>**  
WOVEN DESIGN FLOORING

# LOOM<sup>+</sup> DIFFERENCE

DESIGN AND TECHNOLOGY ARE WOVEN TOGETHER  
將科技與設計編織在一起

## Infinite DESIGN spectrum 無限設計範圍

只有 LOOM<sup>+</sup> 能夠透過混合與匹配3種尺寸的不同花色來創造獨特的設計

Only LOOM<sup>+</sup> enables unique variation of creating your own floor by mixing and matching different patterns in three tile sizes.

## Distinguished NOX EMT™ Core Structure 卓越的 EMT™ 核心結構

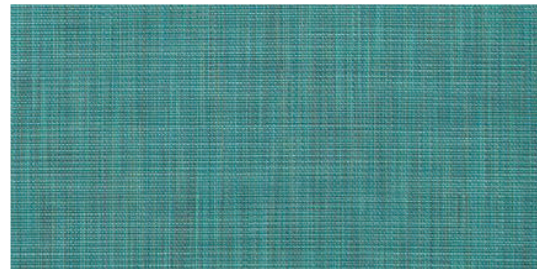
第一個擁有通過認證的 EMT™ 核心結構的編織地板，這確保了最穩定的耐用與安裝

The first woven flooring with proven NOX EMT™ core structure that ensures the most stable and durable installation.

# Colour finder

## KNIT

Cozy & Elegant



FT-2202



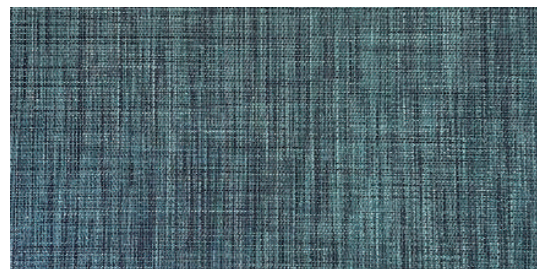
FT-2204



FT-2207



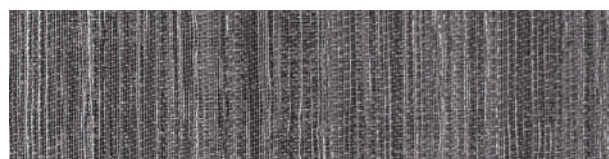
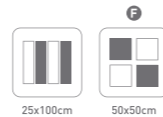
FT-2211



FT-2203

## OMBRE

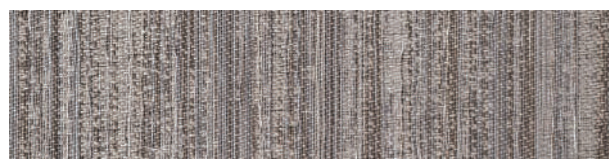
Inspirational & Unique



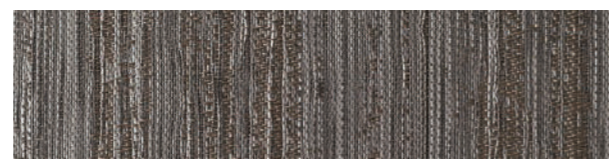
FQ-2401



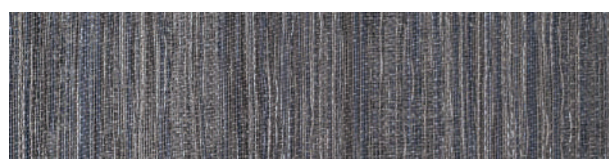
FQ-2402



FQ-2403



FQ-2404



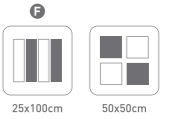
FQ-2405



FQ-2406

## POP

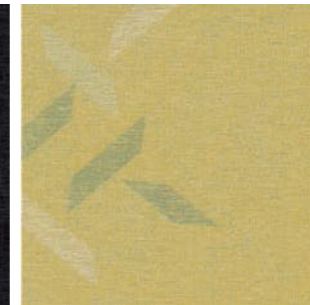
Vibrant & Dazzling



FQ-2701



FQ-2702



FQ-2703



FQ-2704



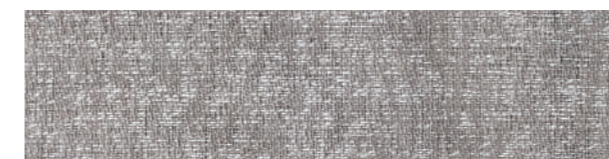
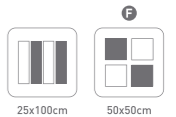
FQ-2705



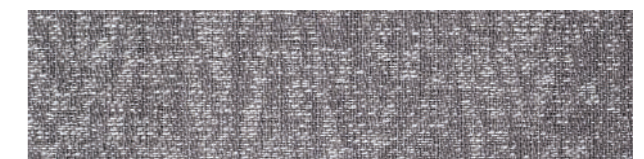
FQ-2706

## HERRINGBONE

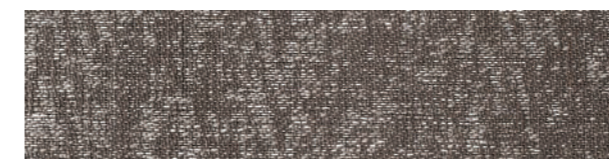
Classic & Cozy



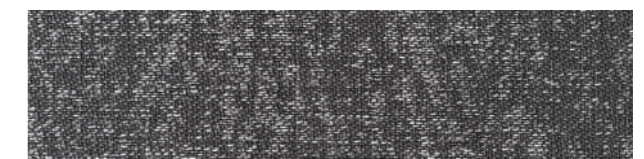
FQ-2501



FQ-2502



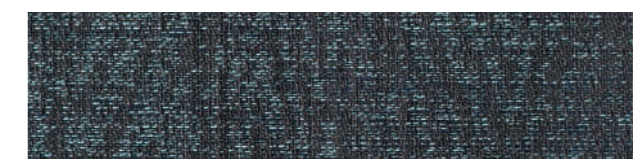
FQ-2503



FQ-2505



FQ-2504



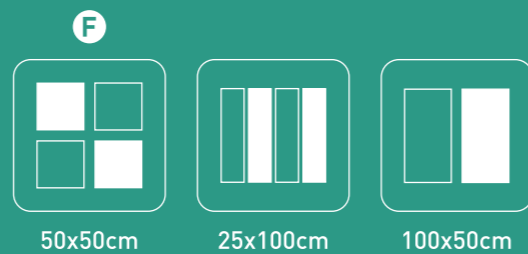
FQ-2506

Reinvent Spaces with

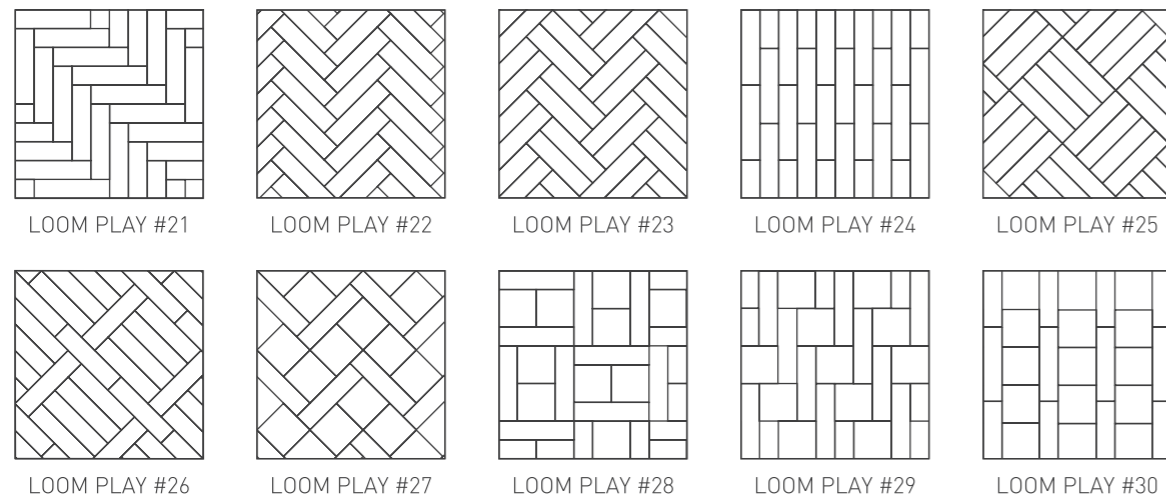
# LOOM<sup>+</sup> PLAY!

您可以自由地通過混合和匹配 3 種尺寸，  
變化的不同圖案和顏色來創建自己的設計

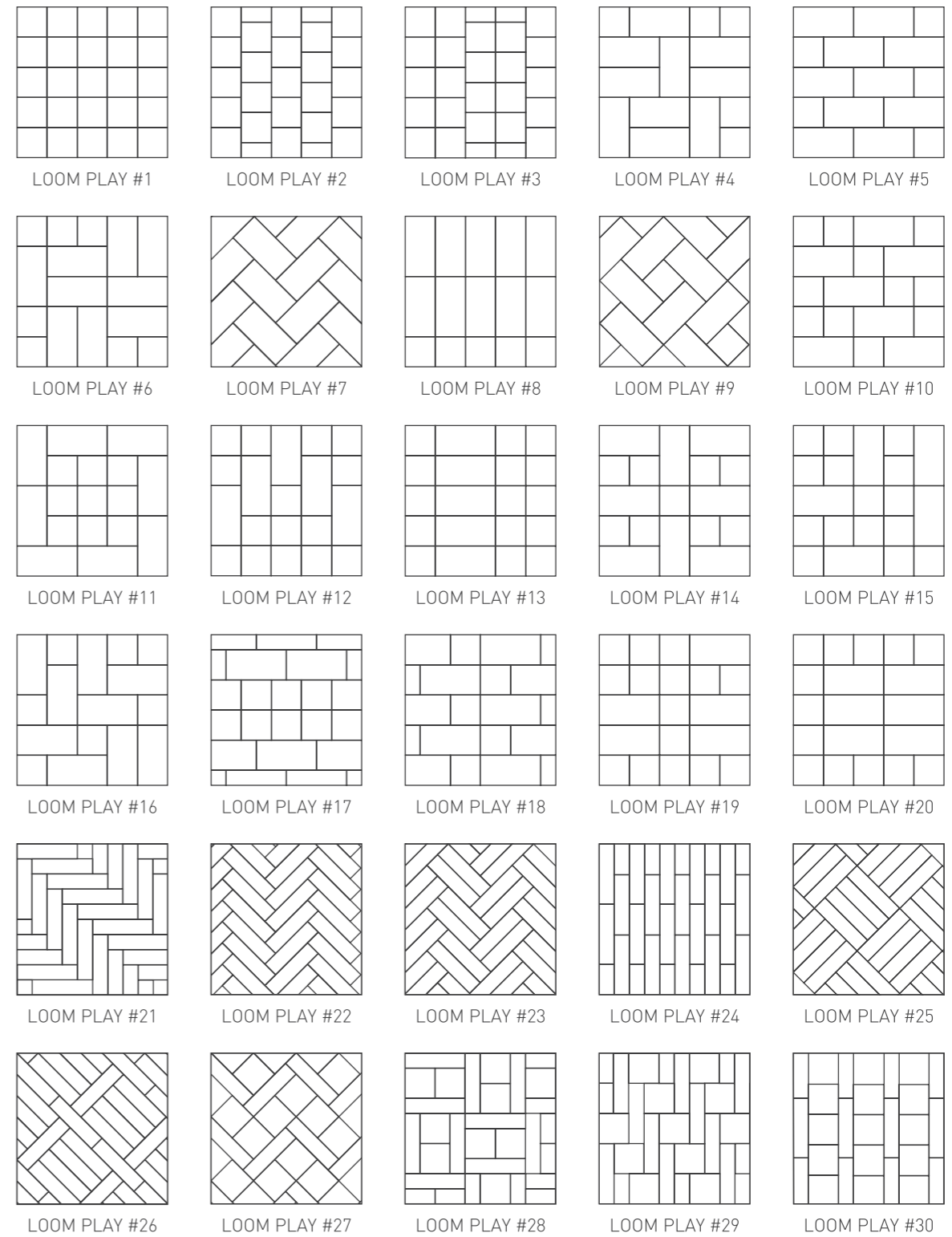
All work together in any combination, giving you  
the freedom to create your own design by mixing  
& matching different patterns and colors in  
3 size variations.



## NEW LOOM<sup>+</sup> PLAY!

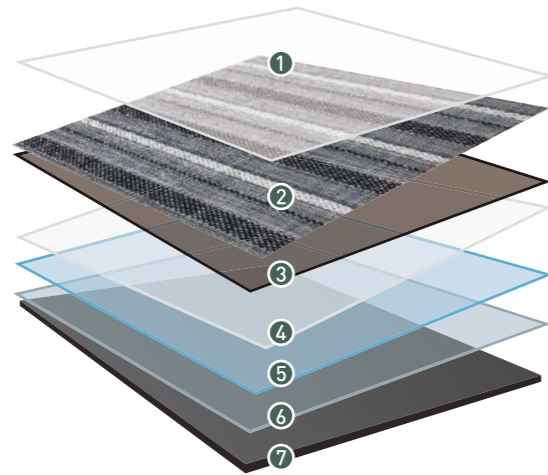


## 安裝概念指南 INSTALLATION CONCEPT GUIDE



# LOOM+ TECHNOLOGY

## 經認證的創新



## 傑出的 NOX Ecotecture® 多層特性

NOX Ecotecture® 多層特性具有創新的功能和安全性，20 多年來在 50 多個國家/地區得到驗證

NOX Ecotecture® Multi-layer Property featured with innovative functionality and safety, proven in more than 50 countries over 20 years

- 1 抗刮擦 & 抗菌陶瓷 PU 塗層**  
(抑制細菌滋生、保護地板不受汙染物與刮痕損壞) 
- 2 高級乙烯基編織層**
- 3 清晰設計保護層**
- 4 加強吸音層**
- 5 玻璃纖維層**  
(起定量訂製 5mm 可加製成)
- 6 防翹曲平衡層**
- 7 壓花設計底層**



### Safe 安全

經過認證的無毒、無鄰苯二甲酸鹽和無玻璃纖維織物  
(起定量訂製 5mm 可加製成)

Certified non-toxic, phthalate-free, and fiberglass-free fabric



### Clean 乾淨

Xtreme CLEANguard 塗層處理，通過不吸收液體來抵抗污漬，讓清潔更容易且快速

Xtreme CLEANguard PU Coating treatment applied to resist stain by not absorbing liquids and thus making spills quick and easy to clean



### Tough 堅韌

適用於高人流量場所

Approved for heavy commercial use



### Quick 快速

快速且易於安裝

Quick and Easy ECOLAY® installation without glue



### Easy 簡單

減少清潔維護的時間與成本

Minimal cleaning time and low maintenance



### Silent & Soft 安靜 & 柔軟

吸收噪音的柔軟表面

Soft surface absorbing sound



### Consistent thickness 穩定一致的厚度

厚度一致，不同圖案可混搭鋪設

Consistent product thickness by patterns and size for mixing and matching different patterns



### Fray-proof 防脫線

採用俐落切割收尾，防止邊緣脫線

Clean-cut finishing for preventing fraying



### Non-Slip 防滑

表面具防滑性

Slip-resistance with woven fabric surface



### Colorfast 不褪色

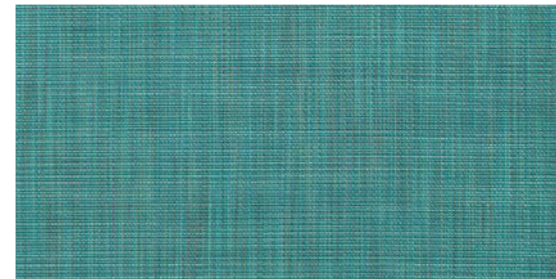
能隨著時間推移，保持絢麗的原始色彩

Colorfast properties retain gorgeous original colors over time

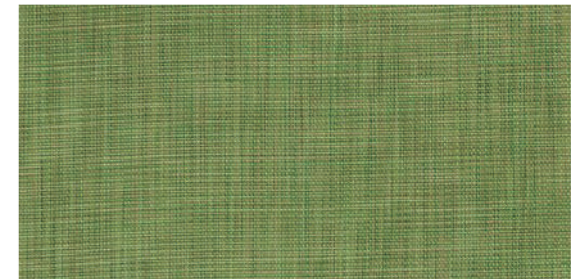
# KNIT

舒適 & 優雅

KNIT系列在居家室內應用的最為廣泛，與各種空間都能協調搭配  
鮮豔的純色色調可透過混合灰色等中性色彩來搭配



FT-2202



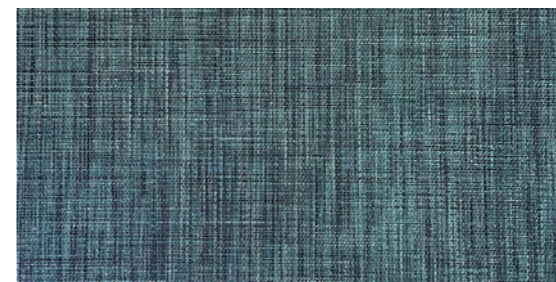
FT-2204



FT-2207



FT-2211

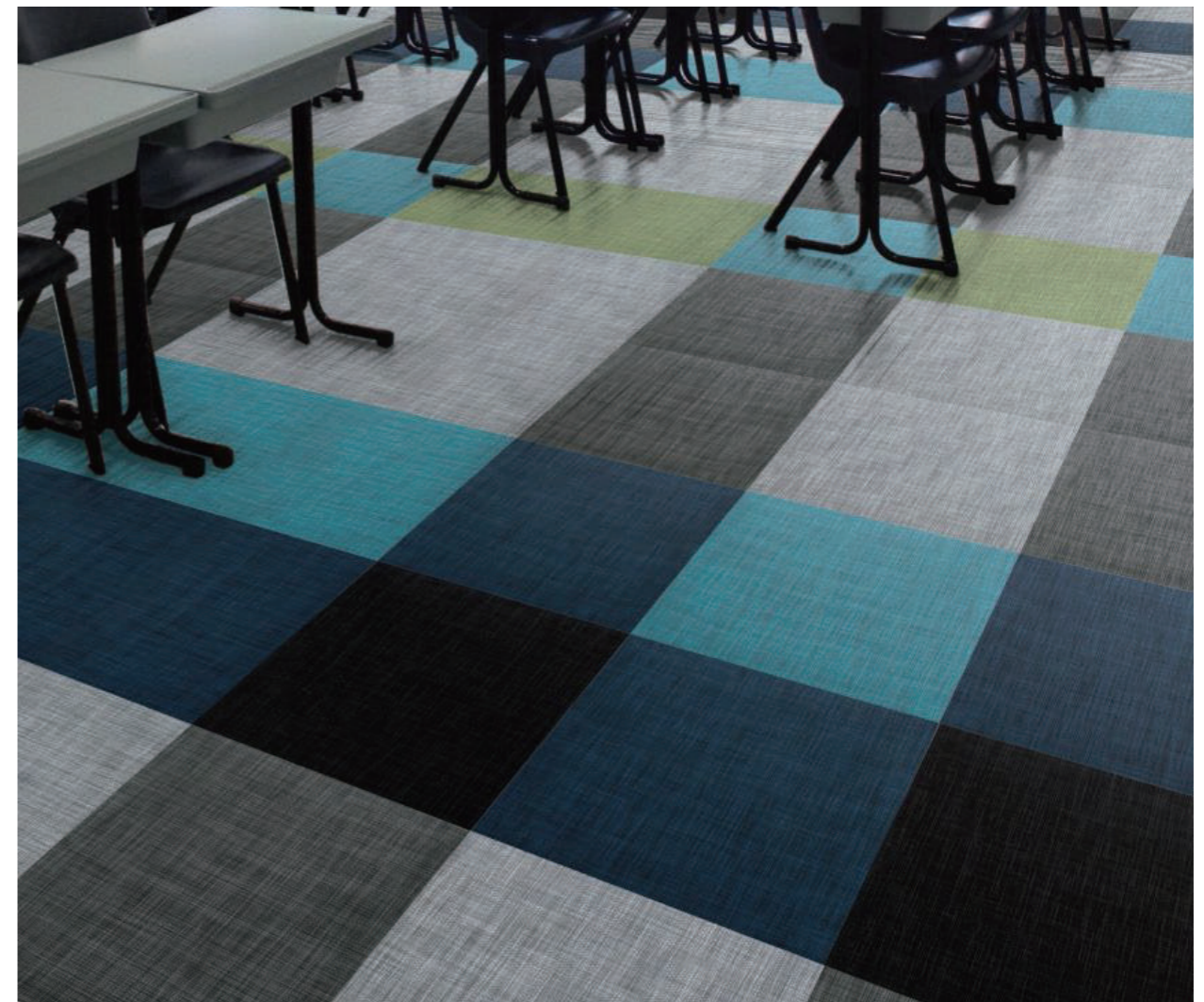
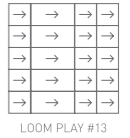


FT-2203

# Education & Libraries



# Education & Libraries



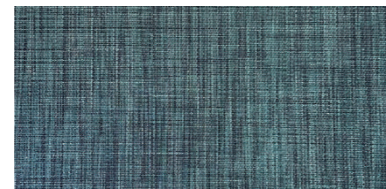
FT-2202



FT-2204



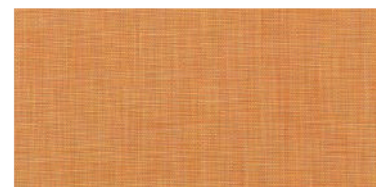
FT-2203



FT-2207



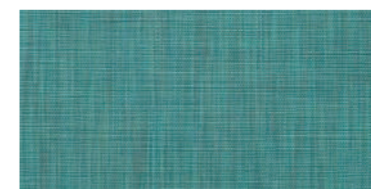
FT-2211



**KNIT+ KNIT**

FT-2203 FT-2208 FT-2210  
FT-2212

FT-2202



FT -2204



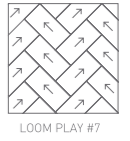
**KNIT+ KNIT**

FT-2202 FT-2203 FT-2204  
FT-2208 FT-2209 FT-2212

# Restaurant



# School



FT-2204



**KNIT+ KNIT**

FT-2201 FT-2203 FT-2204  
FT-2206 FT-2208

FT-2204

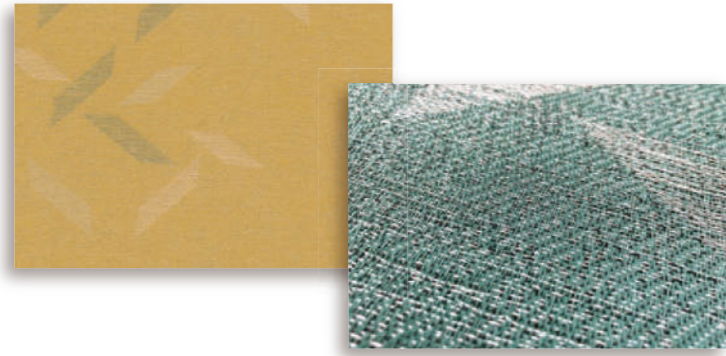


**KNIT+ KNIT**

FT-2208 FT-2209

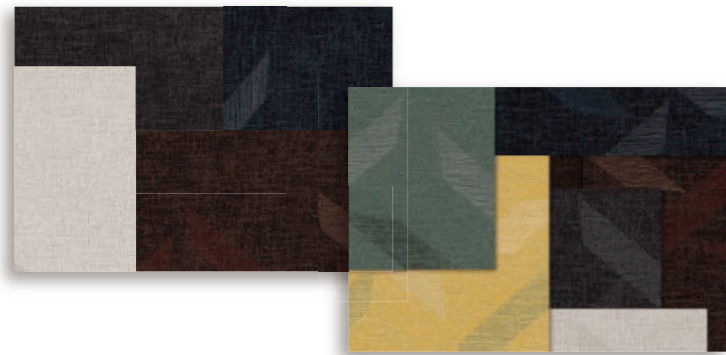
# LOOM+ DESIGN

玩轉顏色、大小和尺寸



## 深邃的色彩構成 Profound Color Composition

實現多樣的色調 — 由藝術家精心挑選：我們為您提供獨特的顏色，表現 LOOM+ 與室內環境的和諧



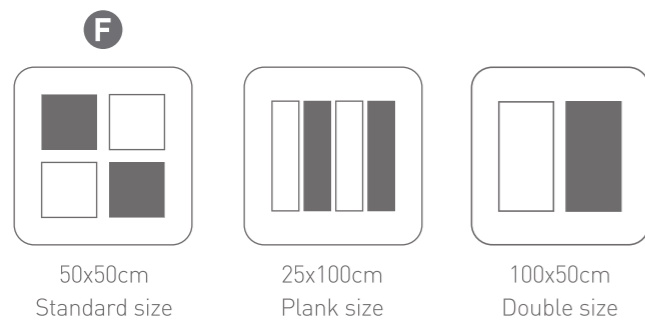
## 顏色和紋理的無限排列 Infinite array of color and texture

有22種顏色可供選擇，涵蓋中性、冷、暖、亮、暗等不同色調，LOOM+ 為您提供4種獨特的設計圖案



## 專為混搭設計 Designed for mix & match

只有 LOOM+ 的創意和獨特的混搭是將相同的織造系統引入4種設計模式來實現



## 最佳的 3 種尺寸變化 Optimal 3 Size variation

LOOM+ 獨特的 50x50cm、25x100cm、50x100cm 共 3 種尺寸，在編織地板市場上首次推出，將平面環境提升成鼓舞人心的室內環境

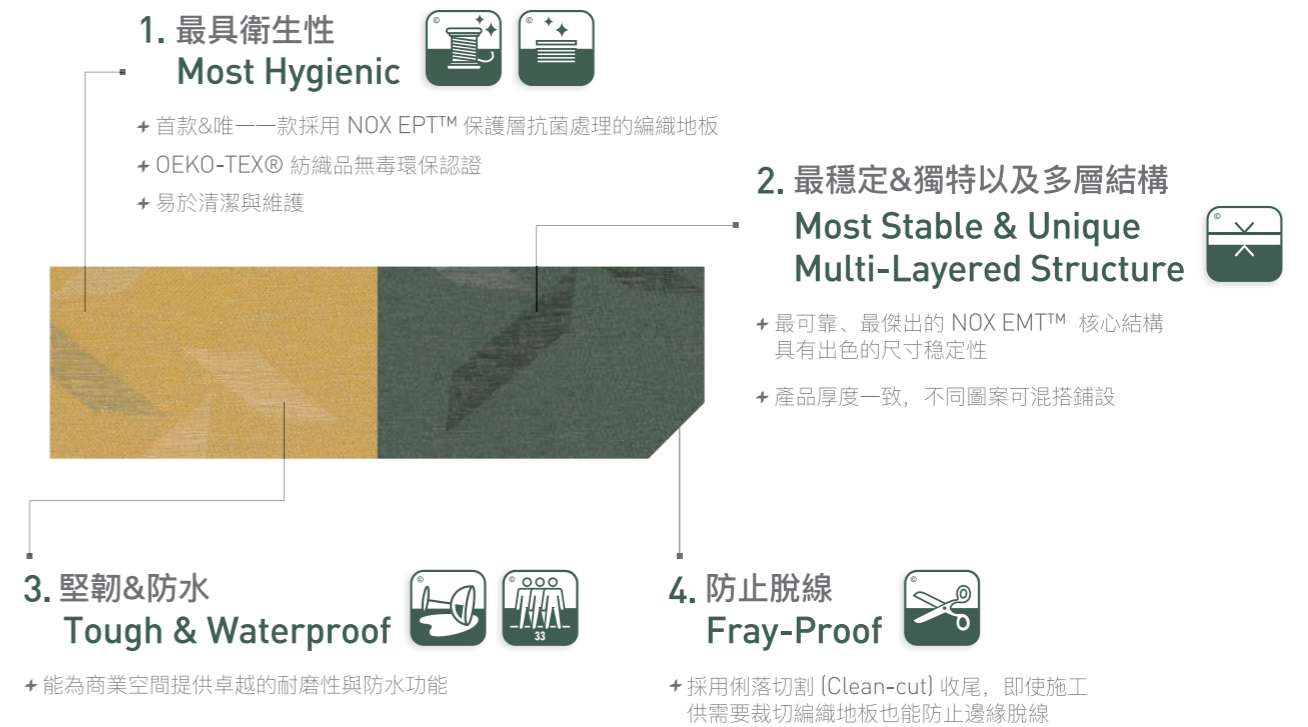
# LOOM+ TECHNOLOGY

經認證的創新



## 卓越的 EMT™ 核心結構 Distinguished NOX EMT™ Core Structure

NOX EMT™ 核心結構具有創新的功能和安全性，20 多年以來已在 50 多個國家/地區得到驗證



## Safe 安全

經過認證的無毒、無鄰苯二甲酸鹽和無玻璃纖維織物  
(起定量訂製 5mm 可加製成)



## Non-Slip 防滑

表面具防滑性



## Quick 快速

快速且易於安裝



## Colorfast 不褪色

能隨著時間推移，保持絢麗的原始色彩



## Easy 簡單

減少清潔維護的時間與成本



## Silent & Soft 安靜 & 柔軟

吸收噪音的柔軟表面

# LOOM<sup>+</sup> DIFFERENCE

DESIGN AND TECHNOLOGY ARE WOVEN TOGETHER

將科技與設計編織在一起

## Better Floor 更好的地板

POP 系列由兩種顏色相似的圖案類型和兩種尺寸組成，提供了 LOOM<sup>+</sup> 獨有的無限設計範圍，共 6 種花色可供選擇

LOOM<sup>+</sup> POP consists of two pattern types in similar color schemes and two tile sizes, offering an infinite design spectrum unique to LOOM<sup>+</sup>

## Distinguished NOX EMT™ Core Structure 卓越的 EMT™ 核心結構

第一個擁有通過認證的 EMT™ 核心結構的編織地板，這確保了最穩定的耐用與安裝

The first woven flooring with proven NOX EMT™ core structure that ensures the most stable and durable installation.

# POP

充滿活力 & 耀眼

POP系列獨特且具創意的設計，即能使特定區域更加亮眼，又能輕鬆地與周圍環境和諧的融為一體。將不同色調的平行四邊形散佈在顏色相近的平紋提花織物上，設計的大膽和充滿活力的形象通過更廣泛、更明亮的顏色選擇達成最大化。這是一個活潑、現代的設計，既時尚又能滿足大眾品味



FQ-2701



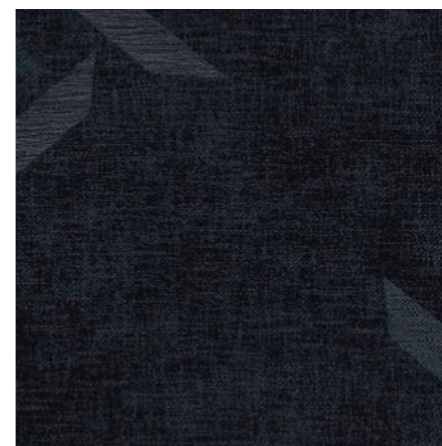
FQ-2702



FQ-2703



FQ-2704



FQ-2705



FQ-2706

每一盒都包含一組隨機的紋路，它們呈現圖案的不同部分。

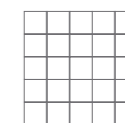
# LOOM<sup>+</sup>

## CREATE YOUR OWN DESIGN



## Sports Center

FQ-2702



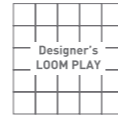
LOOM PLAY #1

### POP

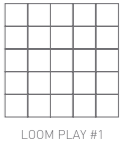
POP 系列也可以搭配同色系的素色提花面料

LOOM<sup>+</sup> POP collection can also be installed with plain jacquard fabrics of the same color scheme. Colors not included in the official collection and their respective plain jacquard fabrics are available upon request.

# Restaurant



# Sports Center



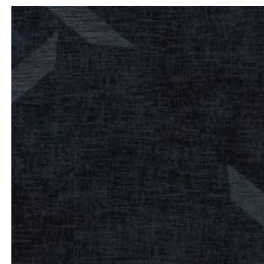
FQ-2701



FQ-2703



FQ-2705



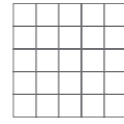
FQ-2701



FQ-2702



# Hospitality



LOOM PLAY #1



FQ-2701



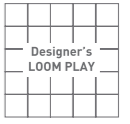
FQ-2702



FQ-2706



# Hospitality



Designer's  
LOOM PLAY



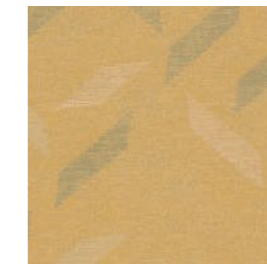
FQ-2701



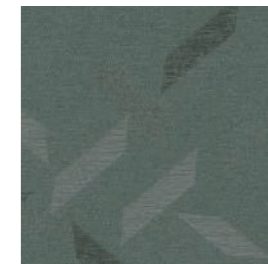
FQ-2702



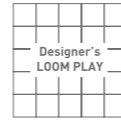
FQ-2703



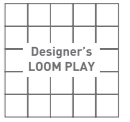
FQ-2704



# Education & Libraries



# Retail shop



FQ-2701



FQ-2702



FQ-2703



FQ-2704



FQ-2701



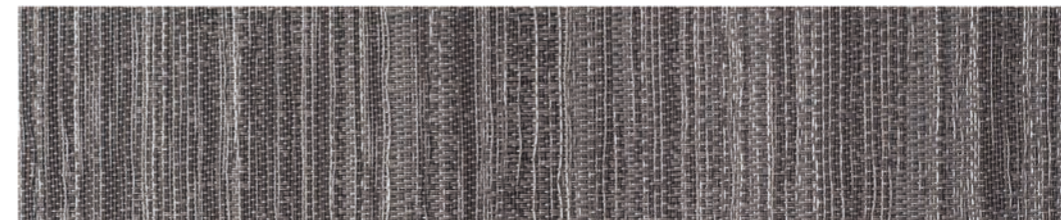
FQ-2706



# OMBRE

靈感 & 獨特

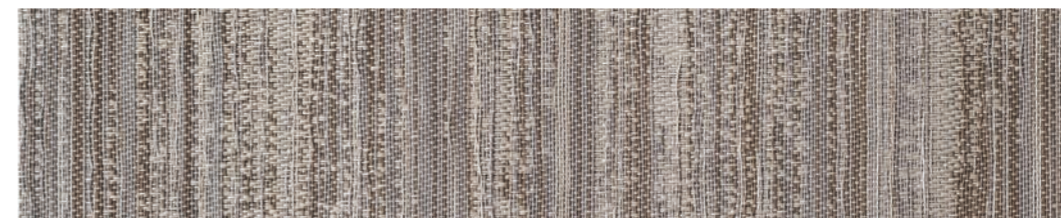
Ombre系列提供獨特的線性圖案、  
豐富的紋理和美麗的色調，以擴張和收縮的視覺效果呈現  
共有6種花色可供選擇。



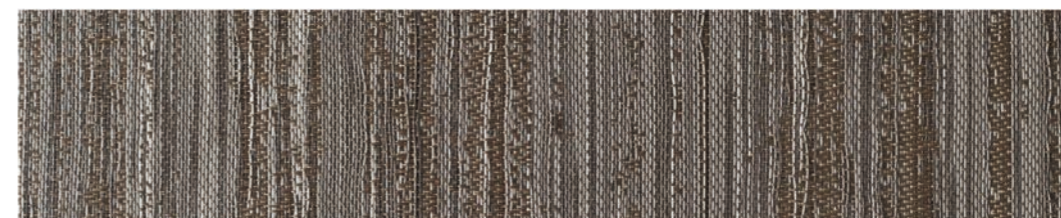
FQ-2401



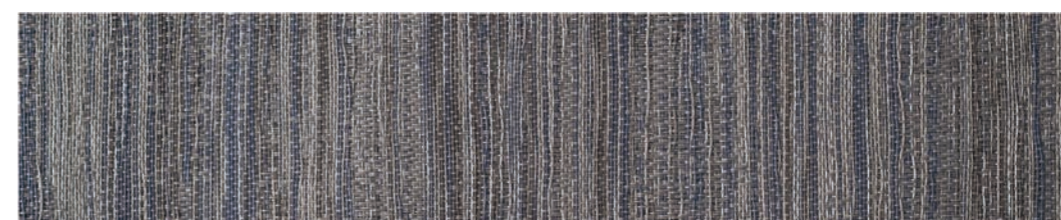
FQ-2402



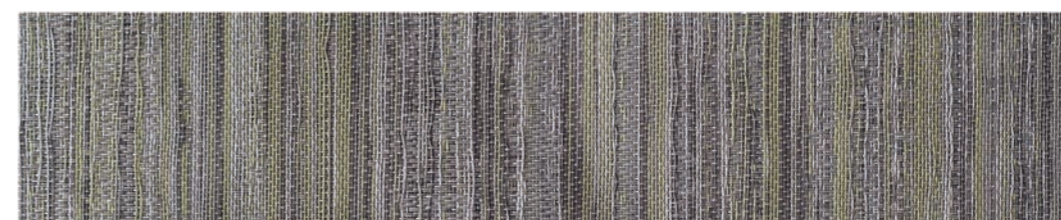
FQ-2403



FQ-2404



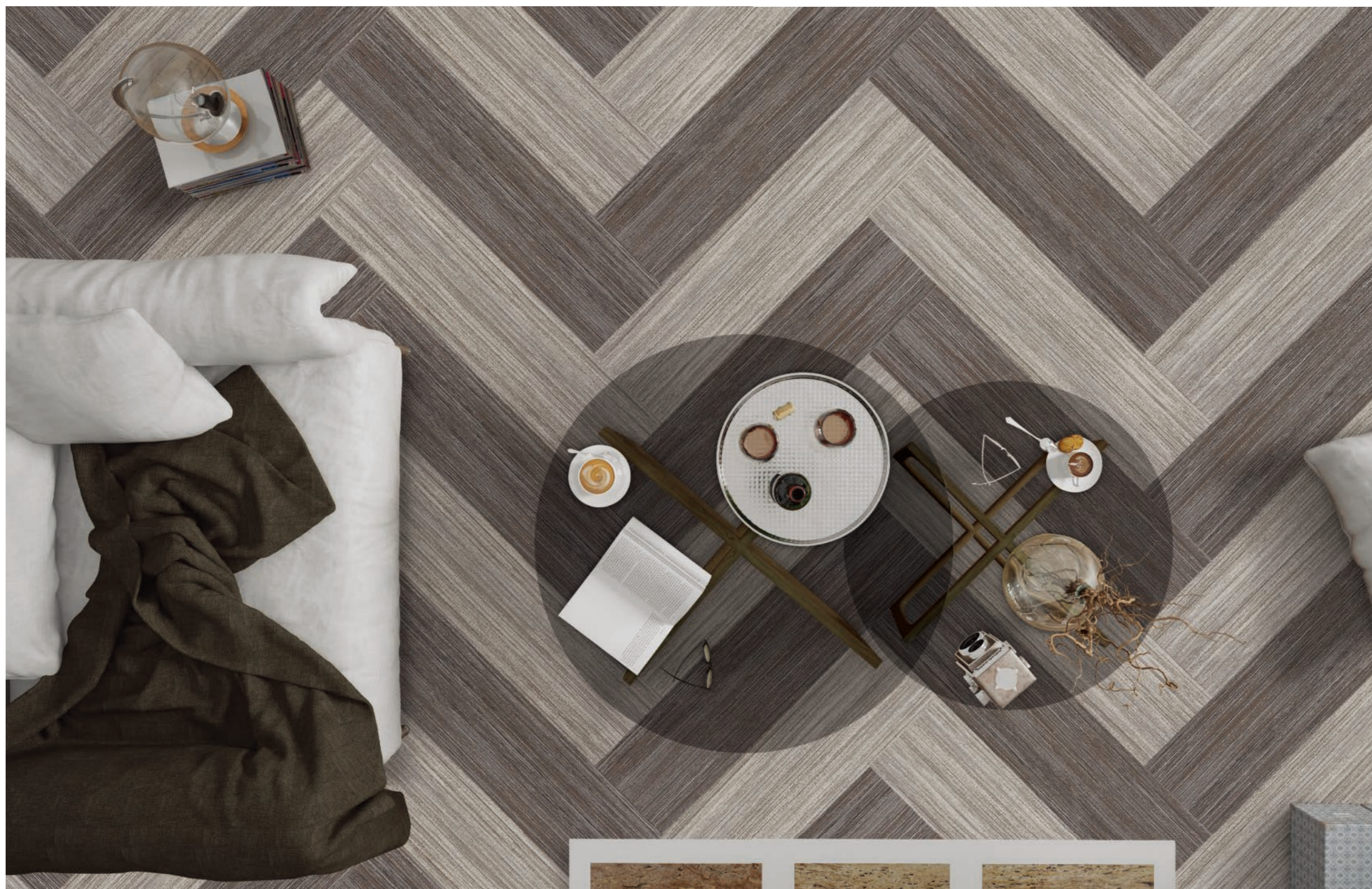
FQ-2405



FQ-2406

# LOOM<sup>+</sup>

## CREATE YOUR OWN DESIGN



## Residential

FQ-2403



FQ-2404



LOOM PLAY #22

### NOX Ombre

獨特的線性圖案、豐富的紋理和美麗的色調，以擴張和收縮的視覺效果呈現

Collection offers a unique linear pattern, rich texture and beautiful accent tones available in 6 sophisticated colors in our new 25cmx100cm plank. Designed to capture its audience with expanding and contracting rhythms.

# Corporate

FQ-2401



FQ-2402



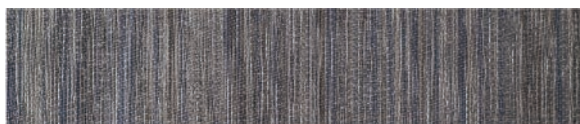
FQ-2403



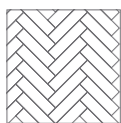
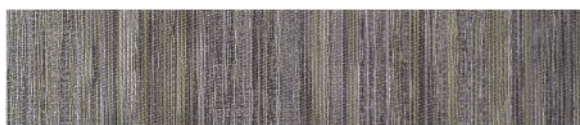
FQ-2404



FQ-2405



FQ-2406



LOOM PLAY #22



## DESCRIPTION

獨特的線性圖案、豐富的紋理和美麗的色調，以擴張和收縮的視覺效果呈現

The Ombre collection offers a unique linear pattern, rich texture and beautiful accent tones. Offered in two different size variations, the Ombre range can provide the freedom to mix and match patterns to create a unique space.

# Healthcare



FQ-2401



# Retail shop



FQ-2402



FQ-2406



# Hospitality



FQ-2403



# Education & Libraries



FQ-2402



FQ-2405



FQ-2406



# Restaurant



FQ-2403



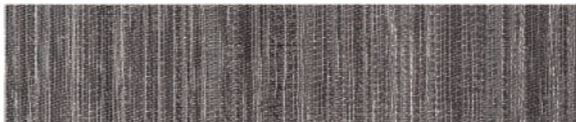
FQ-2404



# Hospitality



FQ-2401



FQ-2402



FQ-2404



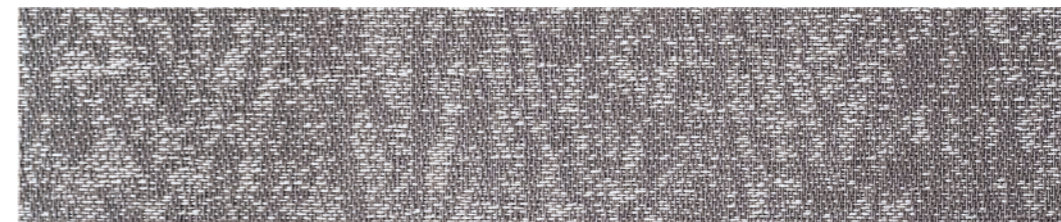
# HERRINGBONE

經典 & 舒適

Herringbone 系列採用冷色與暖色等自然色系，  
在任何房間都能營造藝術設計和舒適感。共有6種花色可供選擇。



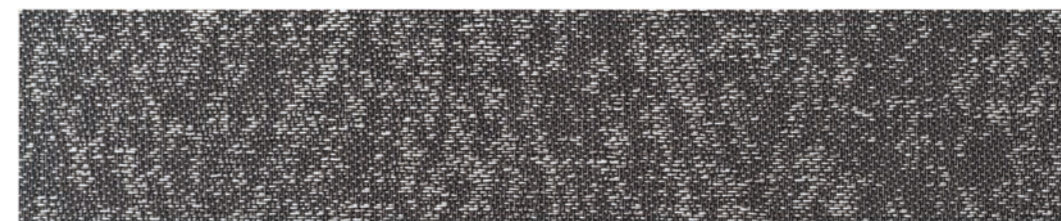
FQ-2501



FQ-2502



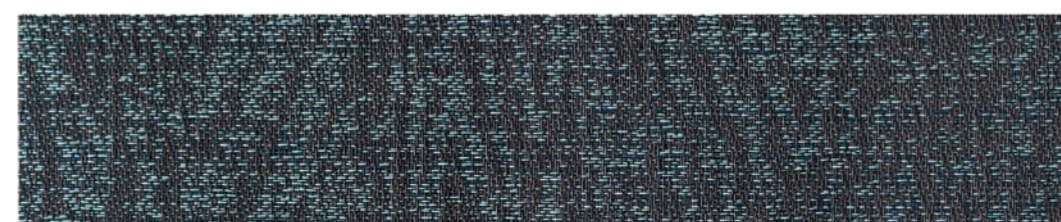
FQ-2503



FQ-2505



FQ-2504



FQ-2506

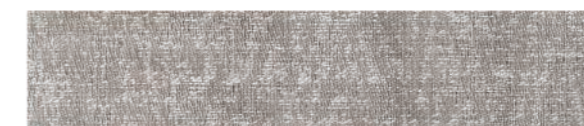
# LOOM<sup>+</sup>

## CREATE YOUR OWN DESIGN

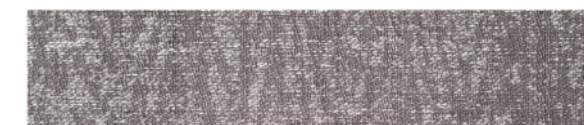


## Residential

FQ-2501



FQ-2502



LOOM PLAY #22

### NOX Herringbone

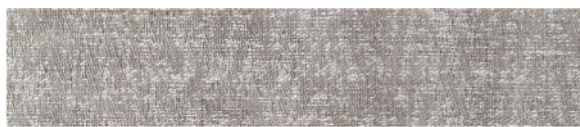
採用冷色與暖色等自然色系，在任何房間都能營造藝術設計和舒適感

Collection offers versatility using cool and warm natural accent tones to create artistic design and comfort in any room. Offered in our new 25cmx100cm plank format, providing a rustic appearance when installed in an ashlar paving pattern.

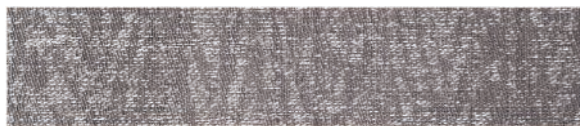
# Sports Center

WOVEN  
DESIGN  
FLOORING

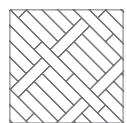
FQ-2501



FQ-2502



FQ-2505



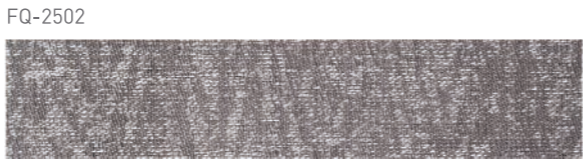
LOOM PLAY #26

## DESCRIPTION

獨特的線性圖案、豐富的紋理和美麗的色調，以擴張和收縮的視覺效果呈現

Reinvent spaces with Loom+ Modula system, with cool and warm natural accent tones. Loom+ Herringbone can bring new proportion and scale to your flooring. With two different sizes, 250mm x 1000mm and 500mm x 500mm, the mix and match options are endless.

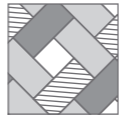
# Education & Libraries



# Retail shop



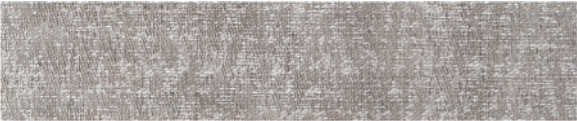
# Corporate



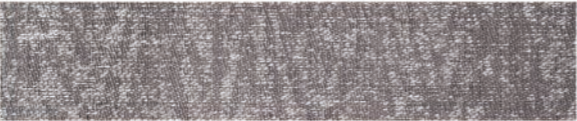
LOOM PLAY  
MIX&MATCH



FQ-2501



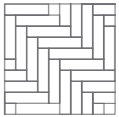
FQ-2502



FQ-2506



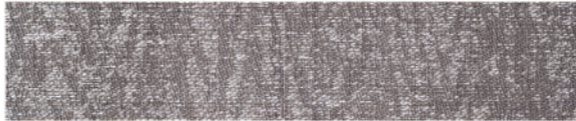
# Restaurant



LOOM PLAY #21



FQ-2502



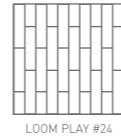
FQ-2503



FQ-2505



# Hospitality



LOOM PLAY #24



FQ-2503



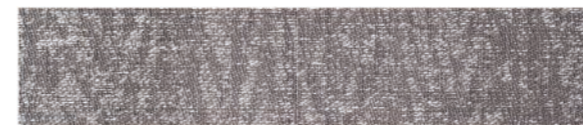
# Healthcare



LOOM PLAY #25



FQ-2502



FQ-2503



FQ-2504



FQ-2505



# TECHNICAL INFORMATION

## Technical Information



### 1. Size & Packing

Size(mm)	Thickness(mm)	Pcs/Box	m <sup>2</sup> /Box	Kg/m <sup>2</sup>
500x500	3	16 pcs/box	4m <sup>2</sup>	5.0
	5	10 pcs/box	2.5m <sup>2</sup>	8.2
250x1000	3	16 pcs/box	4m <sup>2</sup>	5.0
	5	10 pcs/box	2.5m <sup>2</sup>	8.2
1000x500	3	8 pcs/box	4m <sup>2</sup>	5.0
	5	5 pcs/box	2.5m <sup>2</sup>	8.2

### 2. Technical Guide

Characteristics	Standard	Unit	Typical Values	Results
Pollution Resistance	CNS 8907	%	0	PASS
Chemical Resistance	CNS 4447	%	Not Detected	PASS
Plasticizer	CNS 15138-1	%	Not Detected	PASS
Coefficient of Thermal Expansion	CNS 8907	°C <sup>-1</sup>	H -9.37x10 <sup>-6</sup> ; W -4.93x10 <sup>-6</sup>	PASS
Heating scale change rate	CNS 8907	%	H -0.07 , W -0.05	PASS
Water absorption change rate	CNS 8907	%	H +0.04 , W +0.03	PASS
VOC Emission	CNS 8907	mg/m <sup>2</sup>	0.0013	PASS
Slip Resistance	CNS 8907	g/m <sup>2</sup>	PASS	PASS
Color Fastness Test	CNS 8907	grade	4~5	PASS
Dentness	CNS 8907	mm	PASS	PASS
Residuary Dentness	CNS 8907	mm	PASS	PASS
Reverse Warp Test	CNS 8907	mm	0	PASS
Scale	CNS 8907	mm	PASS	PASS
Right Angle Degree	CNS 8907	mm	0	PASS
Softness	CNS 8907		No Cracks	PASS
Peeling strength between layers	CNS 8907	mm	PASS	PASS
Density	CNS 8907	g/cm <sup>3</sup>	1.693	PASS

### 3. Performance Tests-CNS Standard

Article	Method	Unit	MDL	Typical Values	Results
Formaldehyde Emission	CNS 2215	mg/L	≥ 0.05	No Detected	PASS
Wear Resistance	CNS 8907	mg/1000 cycle		29	PASS

### 4. Fire Behavior - According to CNS 7614 (1994) - Type A

Article	Method	Unit	Requirements	Typical Values	Results
Ignition Time	CNS 8907	sec	30	Level1	PASS
After-Flame Time	CNS 8907	sec	<20	0.0	PASS
Char Distance	CNS 8907	mm	<100	32	PASS

### 5. Caution

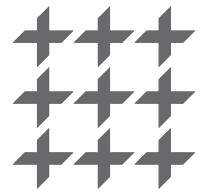
Condition in at least 19°C or the normal temperature of the room where the product is to be laid, for at least 48 hours before installing. Cartons must be stacked less than 5 high and tiles removed 30 minutes before use. The site conditions must be maintained during installation and for at least 48 hours after completion. NOX Corporation will not accept claims where these instructions have not been followed.

Futures:

### 6. Certificate



Visit [www.loom.com.tw](http://www.loom.com.tw) for the detailed installation / maintenance guides and technical information.



WOVEN  
DESIGN  
FLOORING



鳴和官網



鳴和粉專



Reinventing Spaces



Designed and Manufactured by NOX Corporation

**NOX Corp. | KOREA**

Shinho Factory  
Shinho 2nd Factory, Yedang  
Enbo Factory  
Godeok Factory  
Bongsan Factory  
Deoksan Factory  
Choongnam, Korea

**General Agency**

Blinko International Co., Ltd  
No.76-8, Nanshi, Linkou Dist., New Taipei City 244  
Tel +886. 2. 2600. 8789  
Fax +886. 2. 2600. 8799  
www.loom.com.tw